

专 · 铸钢结构
信 · 立全世界

Office Address: Room 2008, Taigu Plaza, 451#,
Jincheng Road, Xiaoshan District,
Hangzhou, China

Mobile & What's App: 0086-13957189628
Skype: zist123
WECHAT: 13957189628

Follow us for More information at: Website:
[Http://www.lutuobuildings.com](http://www.lutuobuildings.com)
[Http://lutuobuilding.en.alibaba.com](http://lutuobuilding.en.alibaba.com)

Email: salesmanager@lutuobuildings.com /
xiebin19830815@163.com

 **LUTUO** 杭州陆拓建筑工程有限公司
Modular Buildings Hangzhou Lutuo Architectural Engineering Co., Ltd



Your Buildings Solution Provider

COMPANY INFORMATION



SCIENTIFIC MANAGEMENT
SEISO / SEITON / SEIKETSU / SHITSUKE

Hangzhou Lutuo Architectural Engineering Co., Ltd
Hangzhou Lutuo Architectural Engineering Co., Ltd is located in Hangzhou city, Zhejiang province, China, belongs to the economically developed Yangtze River Delta where transportation is convenient and manufacturing industry is well-developed. With the ambition to be the best, Lutuo has expanded with an office in Hongkong, and the products have been exported to over 60 countries worldwide with a long list of satisfied customers. Lutuo ensure that you get the best product possible and you can always be offered rapid response by our highly qualified staffs.



WHY CHOOSE US



FAST RESPONSE

response within 4 hours.
provide drawing and quotation
within 48 hours.



FREE DESIGN

custom design for free.



RICH EXPERIENCE

300+ projects in over 50
countries during last
10 years.



ONE-STOP SOLUTION

From 0 to 1 then to N,
from design to installation.

CERTIFICATE



PARTNERS



Enterprise core competence



R&D Capability
Number of R&D Staff: 5-10 People



Trade Capability
Export Experience: 12 years
Website: www.lutuo.com



Quality Control
QC Staff: 5-10 People

Main Markets

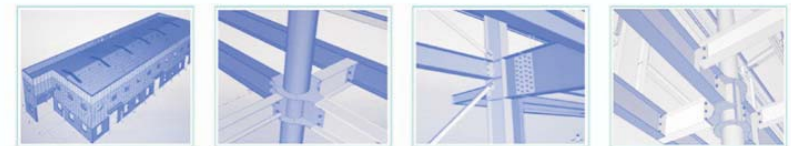
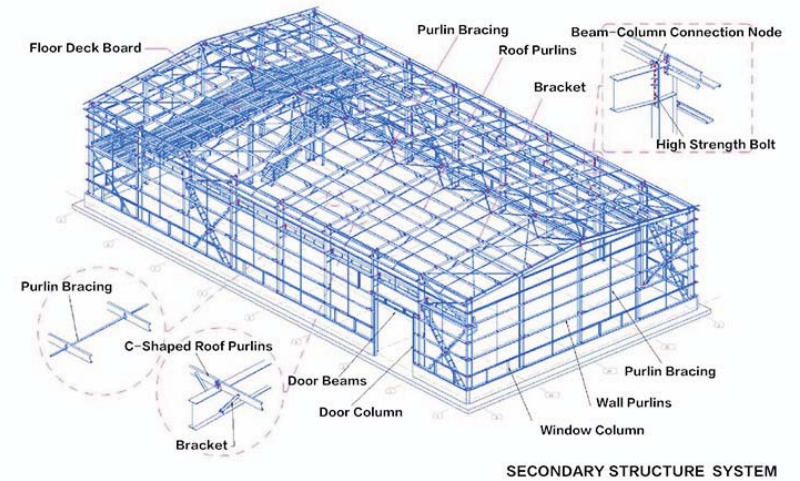
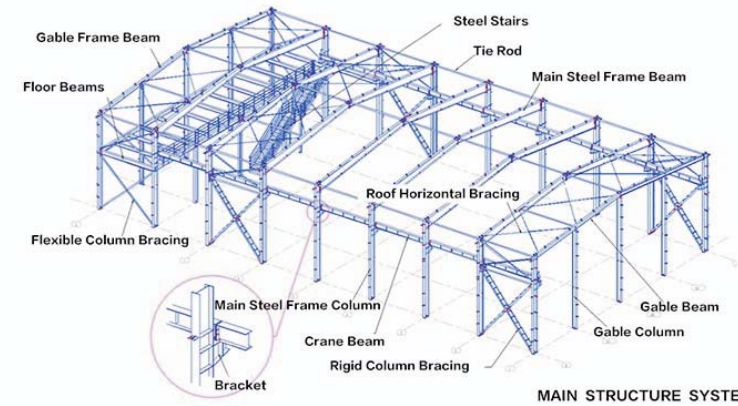


Steel Structure warehouse/workshop/Shed/Plant



SINGLE-FLOOR STEEL STRUCTURE BUILDING

WORKSHOP, WAREHOUSE, SHOPPING MALL



Typical steel plant model



Multi-span low construction
Applicable for office, grocery and any kinds of store



Single-span construction
Applicable warehouse, sales center, factory or other constructions needed large area of high eave



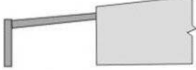
Single-span construction
Applicable for industrial large span workshop (with crane), gymnasium, warehouse etc.



Multi-span construction
Applicable for factory or factory's continuation

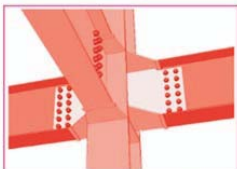
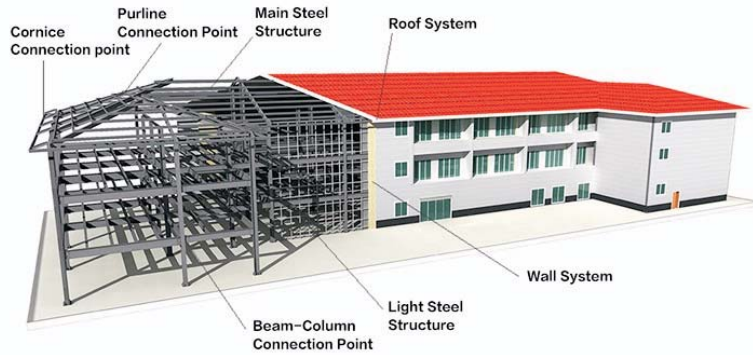


Single-span construction
Applicable for warehouse, sales center, factory or other constructions needed large area of high eave



Single-span construction
Applicable for additional construction, tool room, outside of the construction, expublic place of the storage

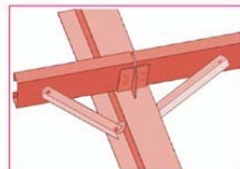
MULTI-FLOOR STEEL STRUCTURE BUILDING HOTEL, DEPARTMENT, OFFICE BUILDING



Beam-column Connection Point



Cornice Connection Point



Purline Connection Point

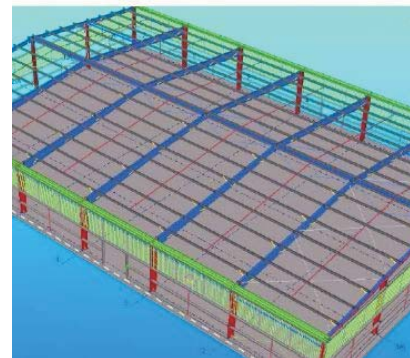
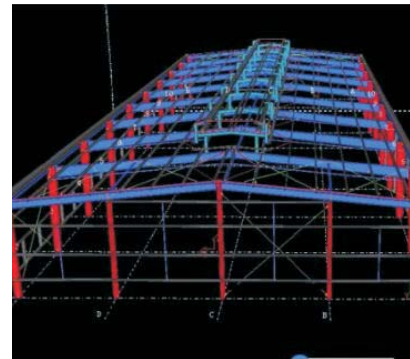
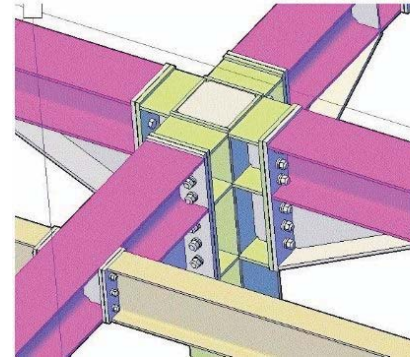
○ Specifications

Production drawings

Professional engineer team with 12 experienced engineers for large span steel structure warehouse, space structure, multiple floor steel structure buildings, heavy steel structure, Box-column structure, to achieve the best solution in Min. steel usage and meet different standards required for both structure calculations and material tests.

Production

Brand new advanced equipment such as flaming cutting, submerged arc welding, assembling machine, adjusting machine, 12 heads shot blasting machine, all kinds of cranes, folk lifts...
Every working procedure has production schedule and QC, also have the right to reject any defected semi-manufactured goods from front procedure.



Product Description

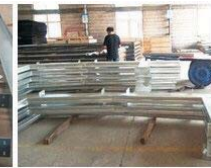
Lutuo provides full package of design and material as well as installation instructions for all warehouse construction projects.

Goods Name	Use Tekla software detailed design steel warehouse building	
Dimensions	SIZE	Width X length X eave height, roof slope
	EAVE Height	3 Meter - 30 Meter (According to customers)
	MOQ	<u>MOQ is 300m²</u>
	Type	Single slope, double slope, muti slope; Single span, double-span, Multi-span, single floor, double floors
Specifications	Base	Cement and steel foundation bolts
	Material	<u>Q235B, Q345B</u> or others as buyers' requests
	Purlin	C PURLIN or Z PURLIN: Size from C120~C300, Z120~Z300
	Bracing	X-type or other type bracing made from angle, round pipe, etc
	Surface	Two lays of Anti-rust Painting or Hot Dip Galvanized
	Bolt	Plain bolt and High-strength bolt
	Roof & wall	Single color corrugated steel sheet 0.326~0.8mm thick, or sandwich panel with EPS, ROCK WOOL, PU etc insulation, thickness around 50mm~100mm, or as buyers' requests
	Door	Sandwich panel sliding door, rolling door or as buyers' requests
	Window	Aluminium alloy window, PVC window
	Accessories	Roof ventilators, Gutter, Rain spout, Saddles buckle, Waterproof plug, Sealant etc.
Advantages	1. Lower cost but beautiful outlook	
	2. High safety performance.	
	3. Easy to assemble and dismantle	
	4. Manufacture under complete quality control system--ISO9001	
	5. Installation with instruction of experienced engineers	
	6. Non-pollution	
Usages	1. workshop, warehouse, plant , garage	
	2. Steel structure frame	
	3. Multi-story building or high rise building project	
	4. Portal frame products	
	5. Structure for smelting and chemical equipment	
	6. Others steel structure buildings	

Details for Accessories and Cladding material:



steel column & beam
(H shape steel)



clerestory frame
(if needed)



clerestory frame
(if needed)



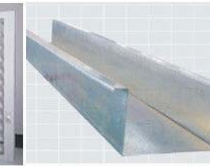
connected plate
(Includes the embedded
plate)



Sliding door
(steel frame+color
steel sheet)



Window
(sliding or shutter
window for option)



galvanized steel plate
water gutter (for
option)



PVC water pipe
(for option)



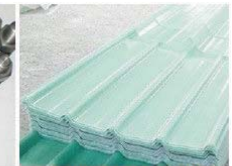
Embedded bolts



turnuckles bolts &
tie rods



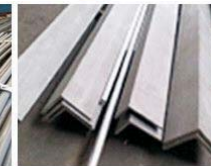
Hardware



daylight roof tiles
(for option)



Tie bar
(steel pipe)



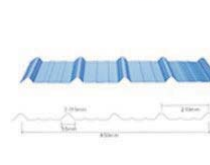
bracing



Roofing free supporting
& column bracing



Purlin (galvanized C
shape steel)



Roof & wall cladding
(option 1)



Roof & wall cladding
(EPS sadnwich panel,
option 2)



Roof & wall cladding
(rock wool sandwich
panel, option 3)



Roof & wall cladding
(glass wool sandwich
panel, option 4)

Packing & Delivery





Half Hour to Load or Down Load Container




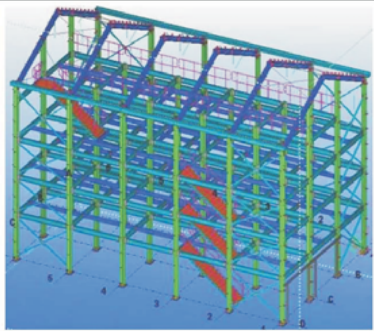
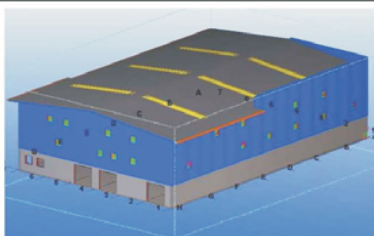

Installation One Step by One Step: Show as the below pictures:



Project Showcase

	Project Name	SG workshop project
	Finished Time	Year 2017, Nov.
	Project Place	Clark, Manila
	Building Area	3600 S.qm
	Project Description	Steel structure workshop with mezzanine, total building area 3600+ S.qm. From project confirmed till finished installation total 4 months
	Project Name	Tonga steel warehouse project
	Finished Time	Year 2017
	Project Place	Tonga
	Building Area	3500 Sqm
	Project Description	For Tonga National Power Supply Company. High standard
	Project Name	SCPA workshop
	Finished Time	Year 2016
	Project Place	Manila Philippines
	Building Area	2600 Sq.m
	Project Description	Design and fabrication, built in heavy corrosion area
	Project Name	AES warehouse project
	Finished Time	Year 2013-2016
	Project Place	POM, PNG
	Building Area	2400 S.qm each
	Project Description	Same design in around 2400S.qm each, till now total 8 units

Project Showcase

	Project Name	PNG Concrete warehouse
	Finished Time	Year 2014-2016
	Project Place	POM, PNG
	Building Area	2700 Sq.m
	Project Description	Six Miles development, total 6 units each around 2700S.qm, till now total building area 16000S.qm
	Project Name	Alain's warehouse
	Finished Time	Year 2017 ongoing
	Project Place	New Caledonia
	Building Area	1150 S.qm
	Project Description	Five floors steel structure warehouse building with elevator, heavy wind loading.
	Project Name	Le Tigre Warehouse
	Finished Time	Year 2017 ongoing
	Project Place	Nacala Mozambique
	Building Area	3158 S.qm
	Project Description	In Three floors, with lift and ramp for track, heavy floor loading, wind load 275km/h, all HDG steel structure.
	Project Name	Virgin Islands Logistic Center
	Finished Time	Year 2015
	Project Place	Virgin Islands
	Building Area	11700 S.qm
	Project Description	Partial two floors steel structure building, heavy wind loading.

结构体系

LGS STEEL
STRUCTURE
SYSTEM

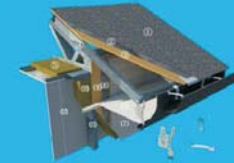


- 1. 屋面系统 Roof System
- 2. 屋面桁架 Roof Truss
- 3. 楼面系统 Floor System
- 4. 楼面梁 Floor Joist
- 5. 墙体系统 Wall System
- 6. 墙面骨架 Wall Steel Framing

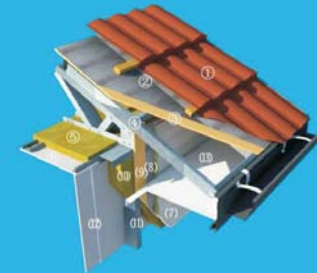
TYPICAL DETAILS OF LUTUO LGS SYSTEM



- ① PU metal curved panel
- ② Housewrap
- ③ OSB board
- ④ Glass fiber insulation
- ⑤ Steel keel
- ⑥ Plaster board
- ⑦ Steel bottom keel
- ⑧ Hold down
- ⑨ Strip footing
- ⑩ Flashing



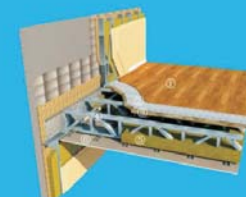
- ① Asphalt shingle
- ② SBS water proof
- ③ OSB board
- ④ Steel roof truss
- ⑤ Fiber glass insulation
- ⑥ Plaster board ceiling
- ⑦ PU metal curved panel
- ⑧ Housewrap
- ⑨ OSB board
- ⑩ Fiber glass insulation
- ⑪ Steel keel for wall
- ⑫ Plaster board



- ① Color steel tile
- ② Housewrap
- ③ OSB board
- ④ Steel roof truss
- ⑤ Fiber glass insulation
- ⑥ Plaster board ceiling
- ⑦ PU metal curved panel
- ⑧ Housewrap
- ⑨ OSB board
- ⑩ Fiber glass insulation
- ⑪ Steel keel for wall
- ⑫ Plaster board



- ① Color steel tile
- ② Wooden strip
- ③ XPS insulation
- ④ Housewrap
- ⑤ OSB board
- ⑥ Steel keel roof truss
- ⑦ Fiber glass insulation
- ⑧ Plaster board ceiling
- ⑨ Lacquer
- ⑩ Fiber cement board
- ⑪ XPS insulation & wooden strip
- ⑫ Housewrap
- ⑬ OSB board
- ⑭ Fiber glass insulation
- ⑮ Steel keel for wall
- ⑯ Plaster board



- ① Laminated floor
- ② Pearl wool
- ③ Fiber cement deck
- ④ Floor truss
- ⑤ Fiber glass insulation
- ⑥ Plaster board ceiling



- ① Ceramic tile
- ② Cement for tile
- ③ Concrete floor
- ④ Galvanized steel deck
- ⑤ Floor truss
- ⑥ Plaster board ceiling



Size	Length*Width*Height
Function	Required function areas such as bedrooms, bathroom, living room, balcony...
Wind load	Such as 200Km/H
Snow load	Such as 2.0Kn/Sqm
Fittings	As per client's detailed requirements and local standards
Insulations	As per local environment
Standards	Can meet AU/NZ, EU standards, pass material test and structure calculation.

36 architects, engineers, project managers.

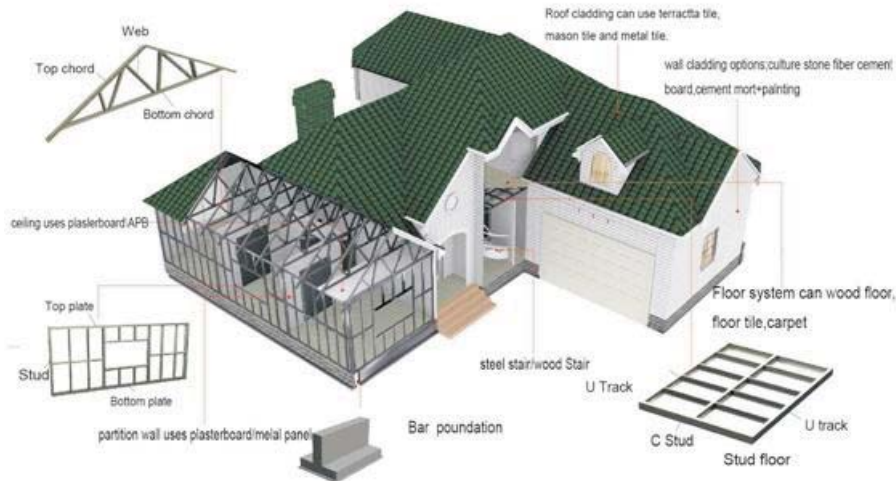
Best offer within 24 hours.

Excellent communication to know your true requirements so we can design the best.

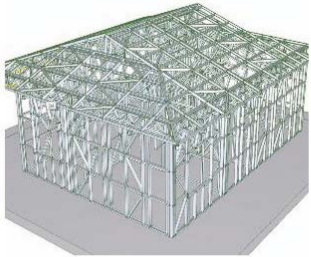
About the Light Gauge Steel Villa

Advantages:

1. Easy to install----all the fixed holes and pipe holes are prepunched, 2-3 workers can finish the installation.(save 70% labor cost, shorten 10% construction period, fasten 30% the construction process)
2. Fire and insect resistance-----All the keels are galvanized, no need to use pesticide, preservative or glue.The wall system is filled with mineral wool and the steel frame system is fireproof.
3. prefabricated-----our factory will first manufacture all the keels, then prefabricate the walls and then pack them.
4. Heat insulation-----the steel wall system is not affected by the temperature or humidity so that the more heat and air conditioner energy remained in the house, thus more energy will be saved.(2-5 time better than traditional structure)
5. Wind & seismic resistance-----the solid connection and the hardness of the steel itself can be applied against seismic and hurricane condition.(the primary structure can resistant 250km/h wind and above 8 grade earthquake) Steel's high strength makes it the best building material to resist the seismic force.
6. Artistic and comfortable-----the interior decoration is per your wish. And the air quality is good.
7. Energy conservation and environment protection-----only 1% construction wastes. The recycling rate of the steel reaches to 70%. until the house life is over, the steel can still be used



Product Description



FrameCAD system for production drawing and production CNC system, can meet AU/NZ standards, most advanced system in the world



Well organized production lines, can also pre-assemble all the steel structures for easy installation on site.



Strict QC to meet client's requirements, can also pre-install some panels to make sure there's no mistake and meet client's satisfactions.

Free custom made designs for all clients. strong design team with 36 architect, engineers, project managers.

Fast response within 24 hours.

Excellent communication to dig your true requirements so that we can design the best you need.

Advantages for prefabricated house plans

Some of the main properties of LGS are as follows:

- Lightness in weight
- High strength and stiffness
- Ease of prefabrication and mass production
- Fast and easy erection and installation
- Substantial elimination of delays due to weather
- More accurate detailing
- Non shrinking and non creeping at ambient temperatures
- Termite-proof and rot proof
- Economy in transportation and handling
- Non combustibility
- Recyclable material

The inside and outside wall



Packing & Delivery



Loose cargo packing, each wall or roof panel packed in one small package, ink-marked each C channels to make assembling very easy.



Can also pre-assembled make the installation even more easy. save a lot installation cost.



Installation



Step ONE.

Set up all light steel structure panels, from wall panel to roof truss and purlin. follow the installation instructions



Step TWO.

Put roof tiles and wall panels, insulation and interior wall cladding, finish the structure installation.



Step THREE.


Install all door, window, ceiling, flashing, electric, plumbing...finish all installation, can finish 0.6-1.2Sqm per working day.



Project Showcase

	Project Name	Number 1 Homes House project
	Finished Time	Year 2015, June
	Project Place	Christchurch NZ
	Building Area	245 S.qm
	Project Description	We design and provide one stop solution for this house including custom made sanitary, kitchen. All meet with AU standards. Refer to: https://www.facebook.com/number1homes/
	Project Name	Villa Dehaumont in Renuion
	Finished Time	Year 2017 ongoing
	Project Place	Renuion Island
	Building Area	147 Sqm Three houses
	Project Description	Heavy wind loading and large span. We pre-assembled all steel frames for easy installation.
	Project Name	Perth Project
	Finished Time	Year 2015
	Project Place	Perth AU
	Building Area	268 Sq.m
	Project Description	Design and fabrication, one stop solution including all AU standard facilities.
	Project Name	Perth Project
	Finished Time	Year 2016
	Project Place	Perth AU
	Building Area	308 S.qm
	Project Description	Design and fabrication, one stop solution including all AU standard facilities.

Project Showcase

	Project Name	Chile Project
	Finished Time	Year 2017 ongoing
	Project Place	South Chile
	Building Area	1138 Sq.m
	Project Description	Ten units each two floors, five connected in one row, very good design and excellent insulation for local cold weather.
	Project Name	BBL Accommodation Project
	Finished Time	Year 2017 ongoing
	Project Place	Coron Philippines
	Building Area	785 S.qm
	Project Description	One and two floor buildings for accommodation and public service for BBL resort.
	Project Name	Moti Resorts Project
	Finished Time	Year 2013 July
	Project Place	Nacala Mozambique
	Building Area	3793 S.qm with 48 resorts
	Project Description	Two bedroom resorts in Nacala near the sea beach, one stop solution including installation.

Container house/Office/Accommodation buildings



About the Container House

The container house adopt the steel structure frame design, with perfect stability, the wind resistance capacity can be more than 210km/h, and the Seismic resistance capacity can be more than 8 Grade. This container house is consist of chassis, housetop, and wall system

The wall system is made of sandwich panel, the core material for this is kind of sandwich panel have EPS/Mineral wool/PU, etc., the thickness is from 50mm to 100mm., the steel sheet is made from colored steel (the Pattern can be optional).The roof and floor are prefabricated at our factory, is made the installment easier. The roof is adopt the overall design, it has enhanced the air tightness, and water-resistance.

This kind of container house is made according to the size of shipping container (6058*2438*2591, it can be composed of 1-3 floors of multi-housing in the horizontal and vertical space.. The Stairs, doors, windows, partition position and dimensions can be diversification, meeting the more requirements of customer, and the interior decoration can be produced according to customer demands. This product can be packaged collapsible, and one 40FT HQ containers can be loaded 7 sets at one-time

Product's characteristic: Beautiful appearance, with good thermal insulation, wind resistance and seismic resistance, convenience for disassembly transportation, repeated use, and so on.

Container house/Office/Accommodation buildings

Product description

Configuration

The ISO standard size (6058*2438*2591mm).

It consist of chassis, roof top and wall system, electrical system, as well as the plumbing system. The core material of sandwich panels can be EPS/Rockwool/PU etc., to choose from.

The thickness of panel is from 50mm to 100mm, the steel sheet is made from colorbond steel (the Pattern can be optional).

Overall design is adopted in the roof that enhance the air tightness, and water-resistance.

Customization

It can stack to 1-3 floors of multi-housing in the horizontal and vertical space.

The stairs, doors, windows, partition position and dimensions can be varied according to customer's requirements.

Interior decoration can be tailored to customer's needs by our design team and procurement system.



Packing method

It can be packaged collapsible, and one 40FT HQ containers can be loaded 7 sets at one-time.

Product frame design

Steel structure frame design
the wind resistance capacity > 210km/h
the Seismic resistance capacity = 8 Grade



Project Showcase



The Details for Installation

Working hours :

The standard 20ft container house: 1 day/set/2 workers; The standard 20ft container house with toilet room:1.5 days/set/2 workers.

The tools:

- 1、 Hoisting machinery for the lifting of the top of the container house: crane or other lifting equipment, lifting force requirements more than 2 tons.
- 2、 Electric hand drill : The power requirements larger than 300W.
(Supporting the electric drill used 8mm six group and PH2*100mm group head angle cross head)
- 3、 Electrician's tools : Needle nose pliers 、 4mm, slotted screwdriver 、 Test pencil, insulating tape 。
- 4、 Wrench : Pillar and corner connection bolt specifications : M10,use the 17mm ratchet spanner 2pcs .The connection bolts for two container house: M16, Use 24mm open ring wrench 2pcs

The main compositions:

- 1、 The main frame (with roof, floor chassis, piillar)
- 2、 The wall structure (with wall panel、 windows、 doors)
- 3、 The electrical system (with wirings, switches, sockets, lights and distribution box)
- 4、 The plumbing system (with input and output)
- 5、 The kitchen and Toilet equipment
- 6、 The furniture
- 7、 The accessories (the decorative materials)



Details:

Location: Philippines

QTY: 36 SET

Project time: 2015.01

usage: Camp office building



Details:

Location: Mozambique

QTY: 36 SET

Project time: 2013.12

Usage: Mining camp

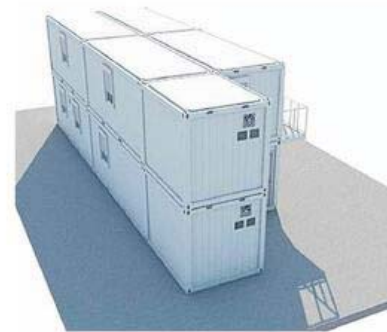
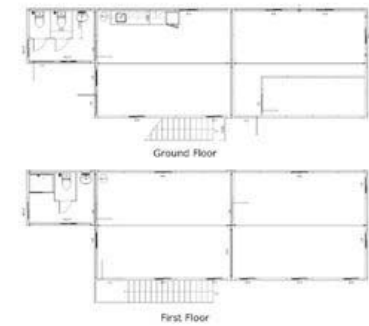


Container house for office

Model No. : Office-01



LAYOUT



Product description

Cost benefits

- It can be designed as per customers' requirements. custom prefab homes actually have cost benefits that traditional construction doesn't have.
- When delivery, it is knock-down to save space.
- It is made in factory, any extra materials are recycled in-house, and construction time is reduced, which are then reflected in the home's cost.

Fast building

- Most of the time savings comes from upfront planning, faster fabrication and the elimination of onsite weather.
- Based on bolts connection without welding work, it could be assembled and disassembled easily.
- 4 workers can finish 40-100 m² in 8 hours according to instruction manual.

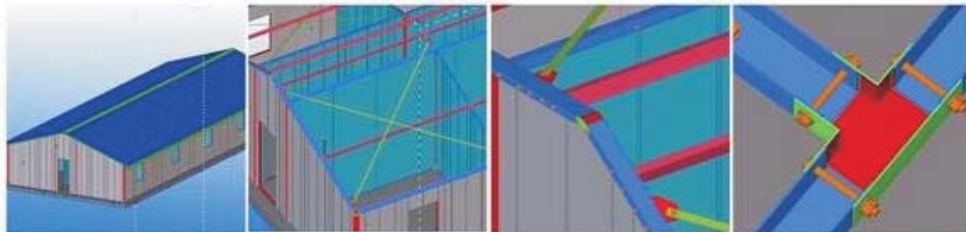
Quality control

- It is built in a controlled environment, according to specific standards, you can be confident that your home will be built with uniform quality.



We help you from upfront planning to completion

Detailing drawing →



Completing →



Our projects



Building Materials:

We also supply the related building materials, such as doors, windows and sandwich panels. We are supply the good quality SIP sandwich wall panel, corrugated roof panel in EPS insulation, PU insulation, or Rockwool insulation as per clients' requirements, the specification as follow:

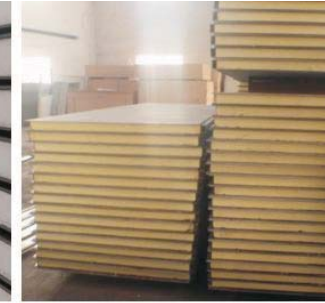
	Item	Discription	Thickness
Sip wall panel	EPS Sandwich panel	EPS density 12kg/cbm, steel sheet on both sides T=0.45mm	50mm, 75mm, 100mm, 150mm, steel sheet can be T=0.3~0.65mm
	PU Sandwich panel	PU density 40kg/cbm, steel sheet on both sides T=0.45mm	
	Rockwool Sandwich panel	Rock wool density 120kg/cbm, steel sheet on both sides T=0.45mm	
Corrugated roof panel	EPS Sandwich panel	EPS density 12kg/cbm, steel sheet on both sides T=0.45mm	50mm, 75mm, 100mm, 150mm, steel sheet can be T=0.3~0.65mm
	PU Sandwich panel	PU density 40kg/cbm, steel sheet on both sides T=0.45mm	
	Rockwool Sandwich panel	Rock wool density 120kg/cbm, steel sheet on both sides T=0.45mm	

Building Materials:



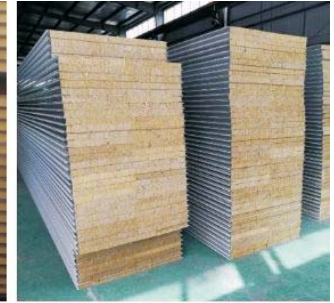
EPS Panel

EPS density 12kg/cbm, steel sheet on both sides T=0.45mm



PU Panel

PU density 40kg/cbm, steel sheet on both sides T=0.45mm



Rock Wool Panel

Rock wool density 120kg/cbm, steel sheet on both sides T=0.45mm

Packing

Steel Rack packing with plastic film rapt, with foam for protection.

